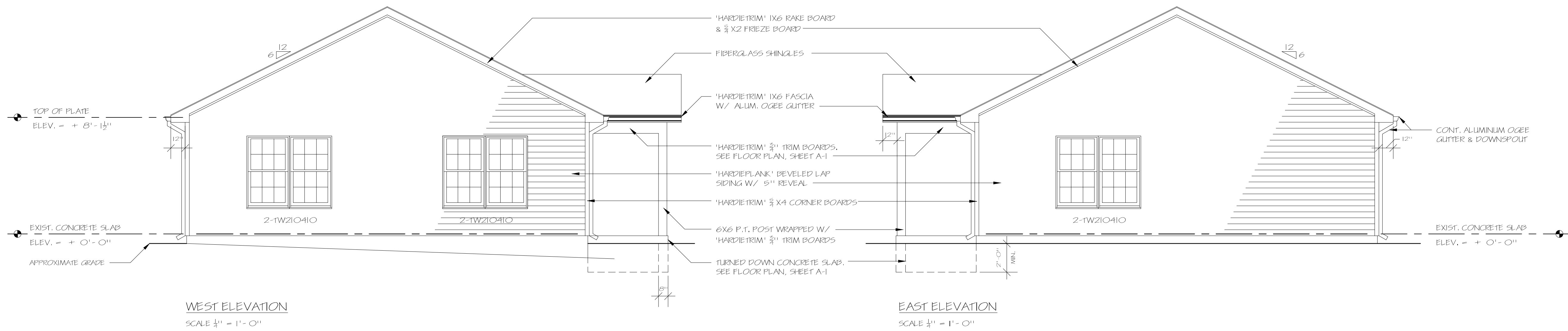
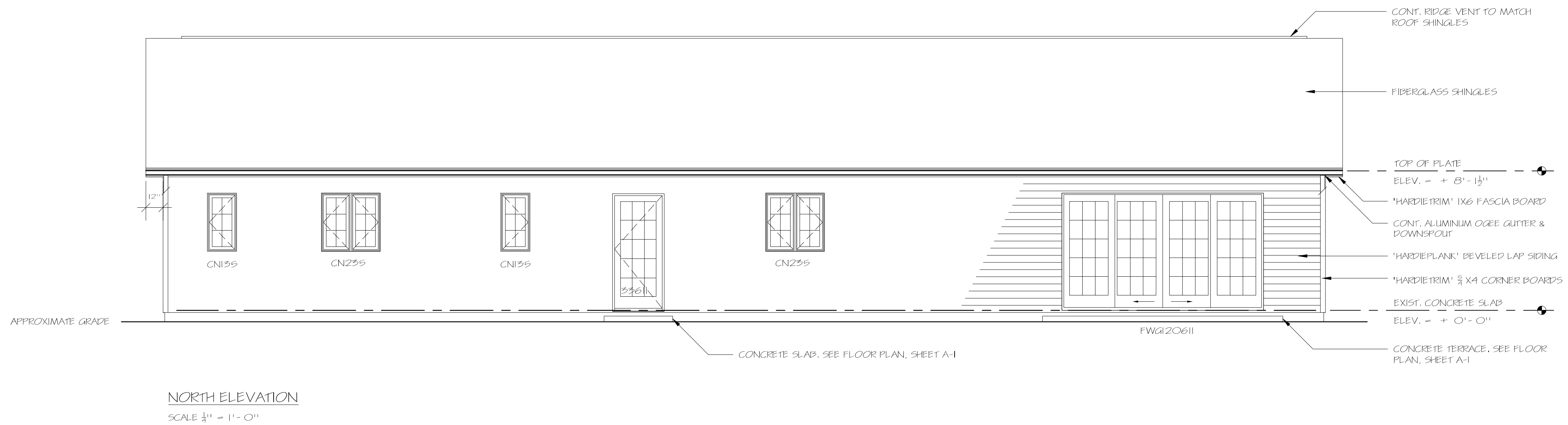


SOUTH ELEVATION
SCALE 1/4" = 1'-0"



WEST ELEVATION
SCALE 1/4" = 1'-0"

EAST ELEVATION
SCALE 1/4" = 1'-0"



NORTH ELEVATION
SCALE 1/4" = 1'-0"

SHEET ELEVATIONS		REVISION	
COMM NO. 1087	DRAWN PK SCALE AS NOTED	DATE 09-14-20	DWG A-2